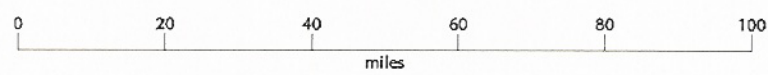
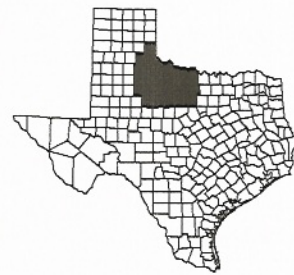
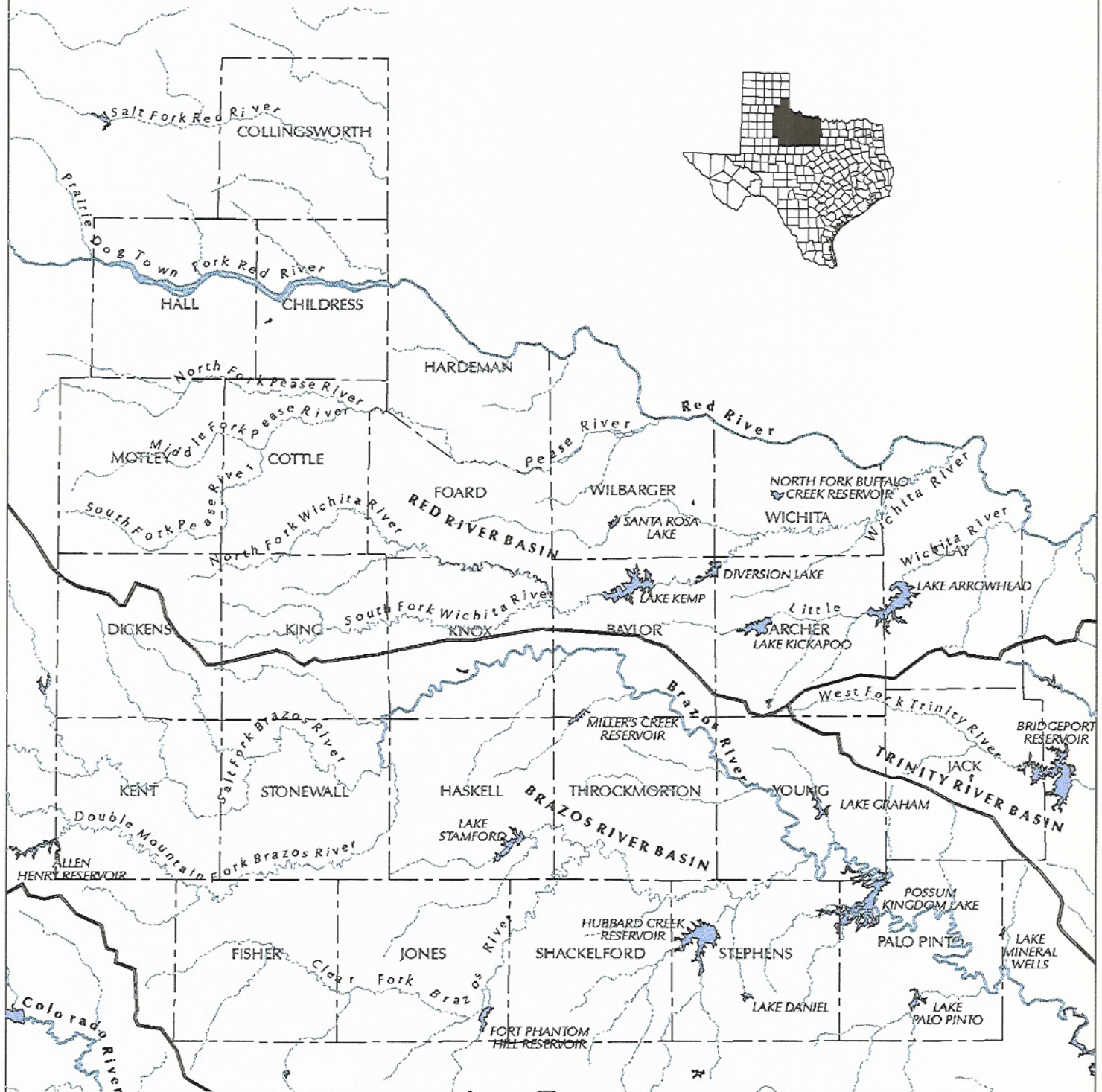


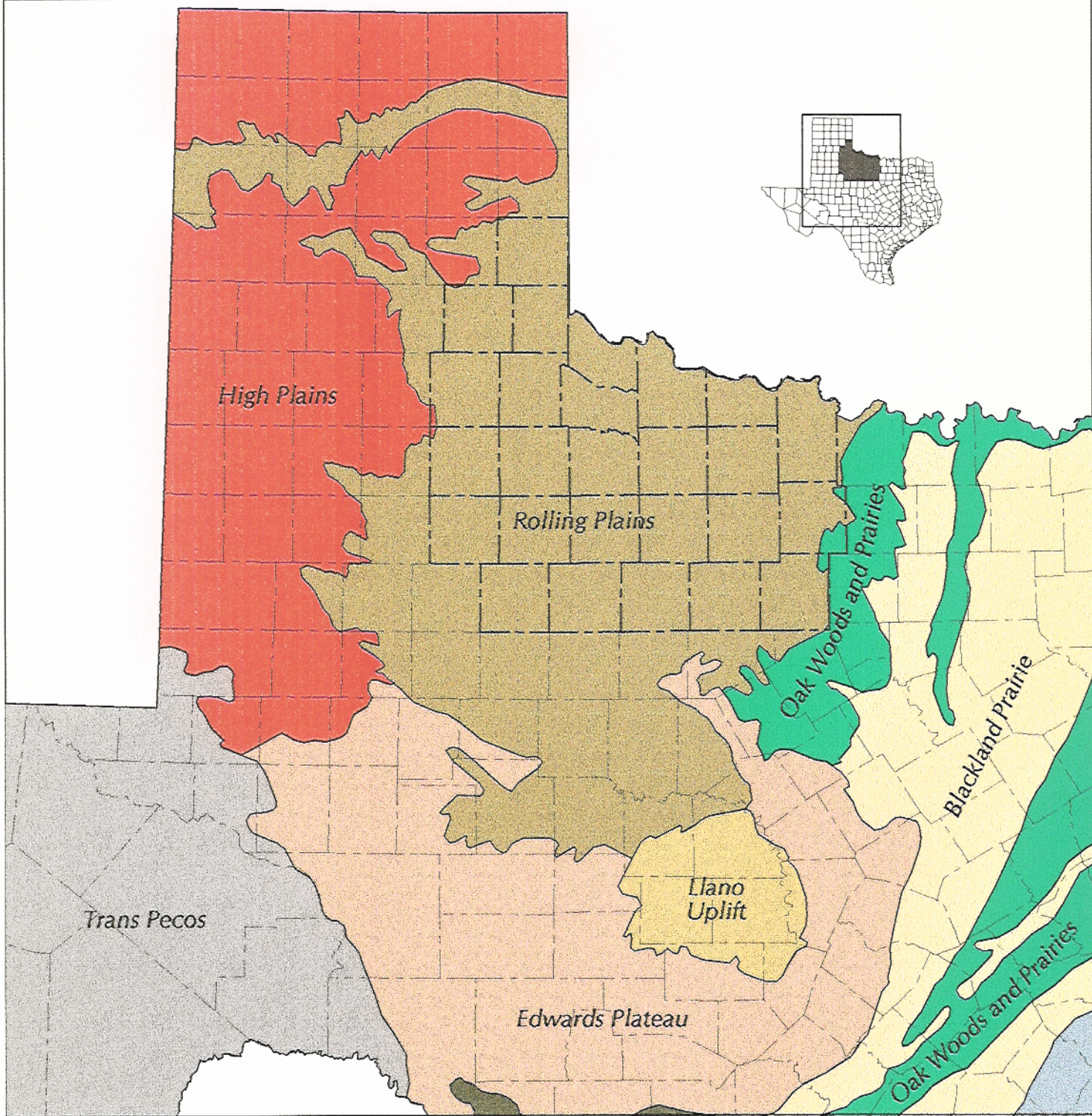
Figure 1: Major Rivers and Reservoirs in the North Texas Study Area



Produced by the TPWD GIS Lab, February 1998.
No claims are made to the accuracy of the data or to the suitability of the data for a particular use.

Sources:
Texas Natural Resources Information System
Texas Water Development Board
U.S. Geological Survey
Projection:
Texas Statewide Projection (Lambert Conformal Conic)

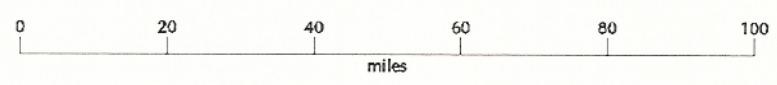
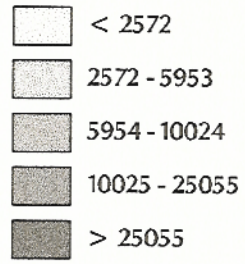
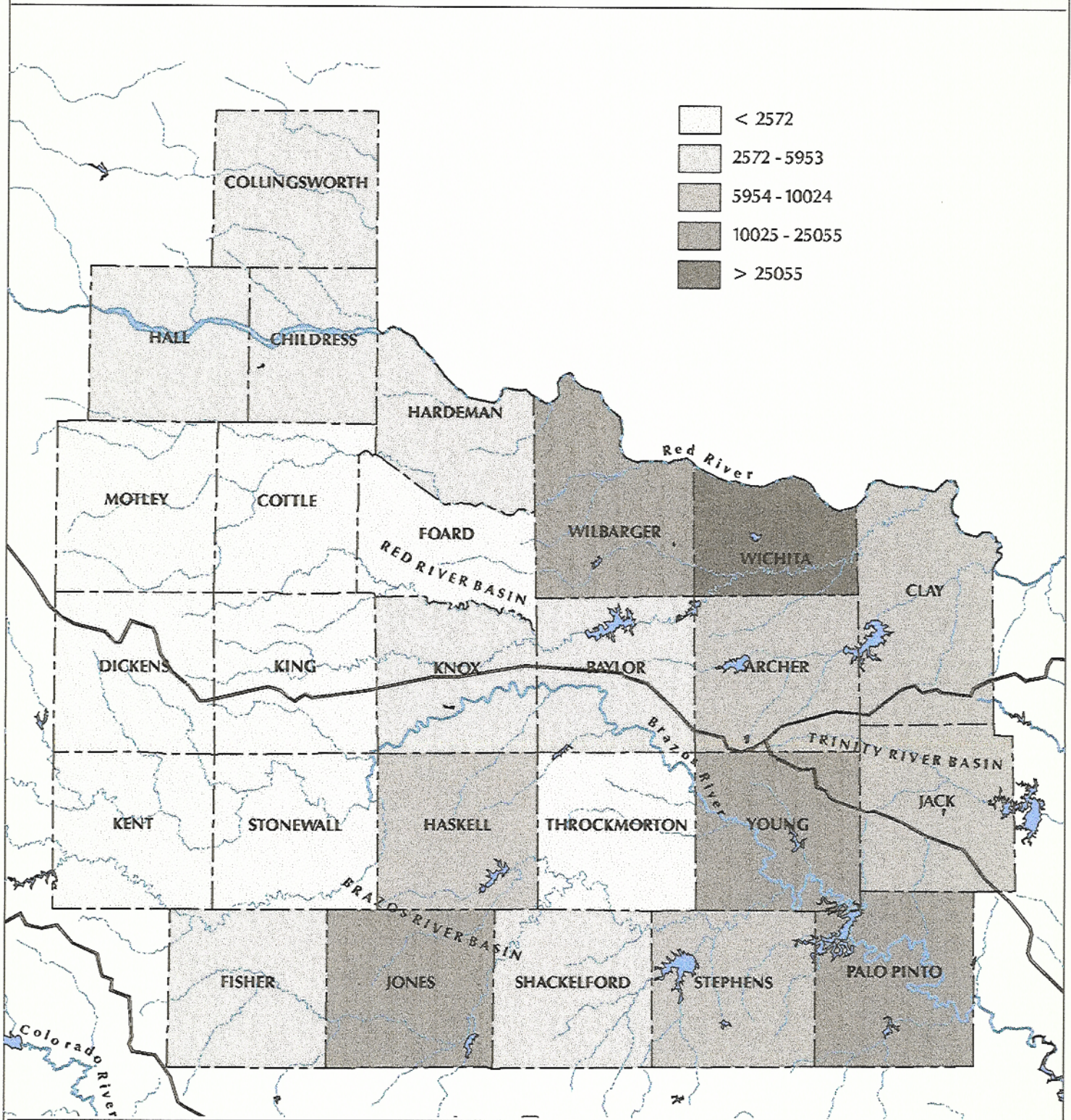
Figure 2: Natural Regions Surrounding the North Texas Study Area



Produced by the TPWD GIS Lab, February 1998.
No claims are made to the accuracy of the data or
to the suitability of the data for a particular use.

Source: *Preserving Texas' Natural Heritage*.
LBJ School of Public Affairs Policy
Research Project, Report 31, 1978.

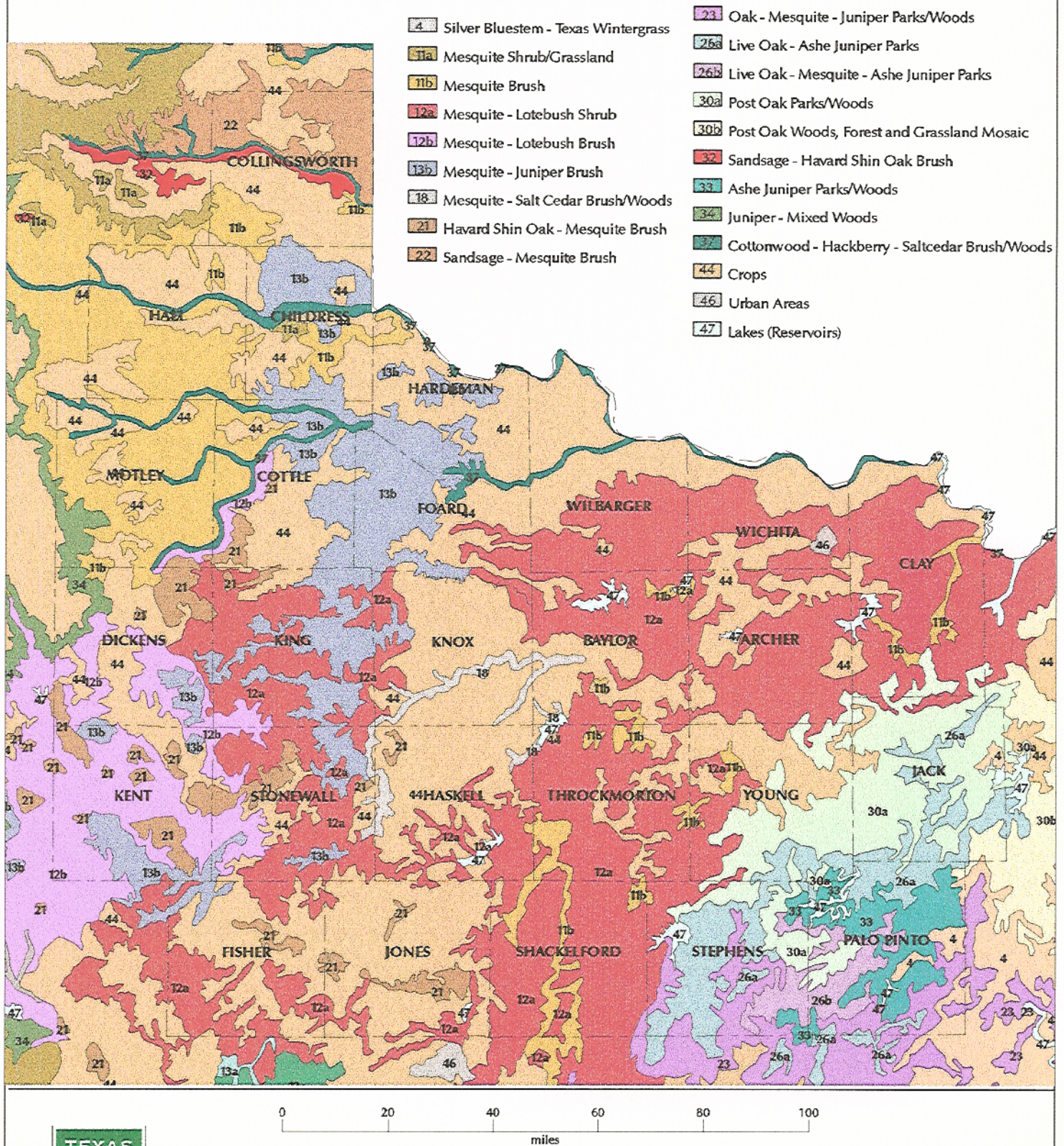
Figure 3: 1990 Population by County in the North Texas Study Area



Produced by the TPWD GIS Lab, February 1998.
 No claims are made to the accuracy of the data or
 to the suitability of the data for a particular use.

Source:
 1996 Consensus Texas Water Plan
 Projection:
 Texas Statewide Projection (Lambert Conformal Conic)

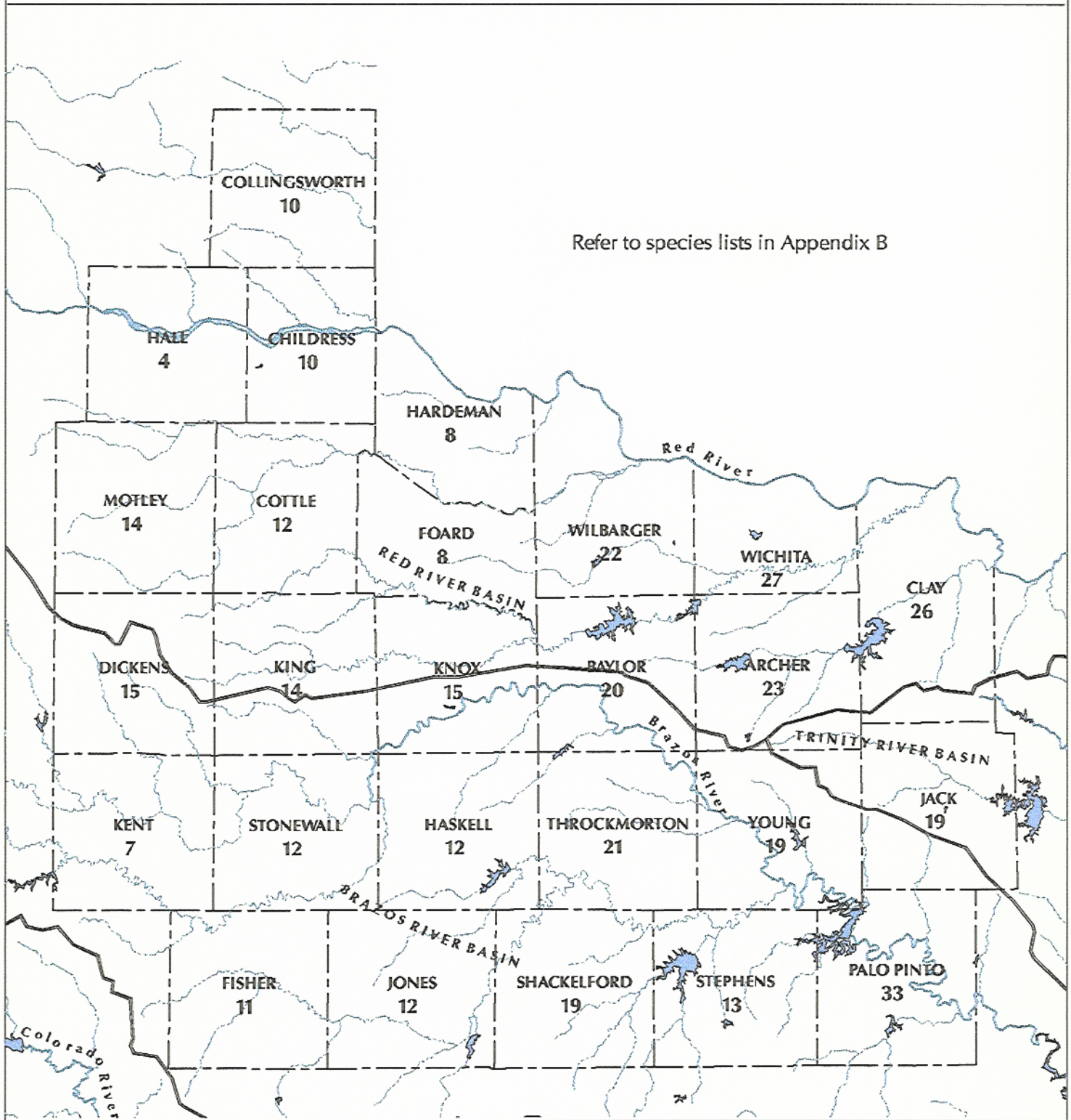
Figure 4: Vegetation Types in the North Texas Study Area



Produced by the TPWD GIS Lab, February 1998. No claims are made to the accuracy of the data or to the suitability of the data for a particular use.

Source: TPWD GIS Lab archives. The vegetation represents a general summary of previously produced larger scale maps. Delineation of vegetation occurs only where the actual vegetation exhibited adequate resolution for definition.

Figure 6: Total Number of Amphibian Species, and/or Aquatic or Wetland-Dependent Reptile Species and Mammal Species by County in the North Texas Study Area

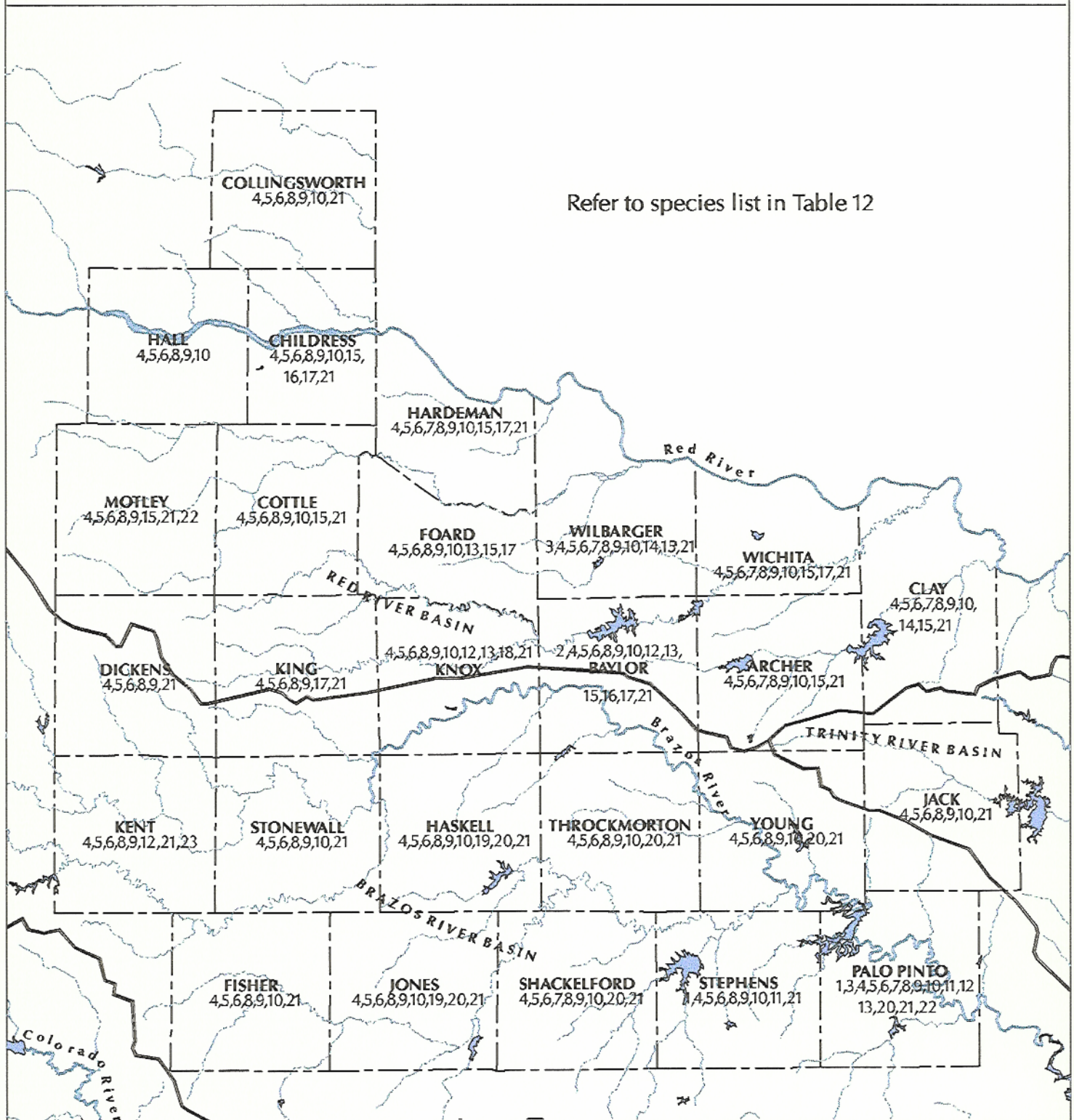


Produced by the TPWD GIS Lab, February 1998.
No claims are made to the accuracy of the data or to the suitability of the data for a particular use.

Source:
TPWD Endangered Resources Branch
Texas Biological and Conservation Data System 1998

Projection:
Texas Statewide Projection (Lambert Conformal Conic)

Figure 7: Special Species by County in the North Texas Study Area

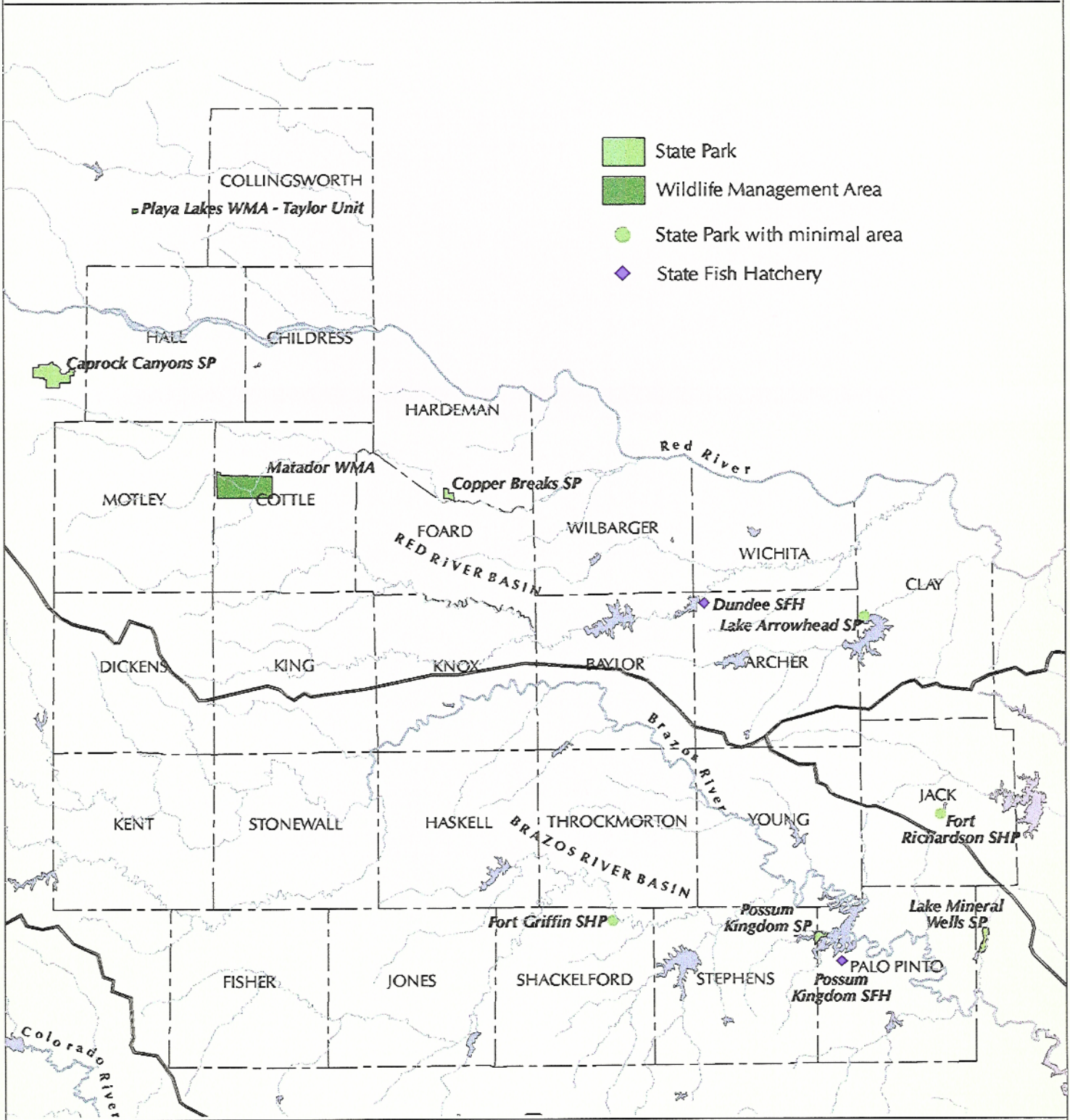


Produced by the TPWD GIS Lab, February 1998.
No claims are made to the accuracy of the data or to the suitability of the data for a particular use.

Source:
TPWD Endangered Resources Branch
County Special Species Lists 1998

Projection:
Texas Statewide Projection (Lambert Conformal Conic)

Figure 8: Texas Parks and Wildlife Facilities in the North Texas Study Area



Produced by the TPWD GIS Lab, February 1998.
 No claims are made to the accuracy of the data or
 to the suitability of the data for a particular use.

Source:
 TPWD GIS Lab archive data 1998

Projection:
 Texas Statewide Projection (Lambert Conformal Conic)